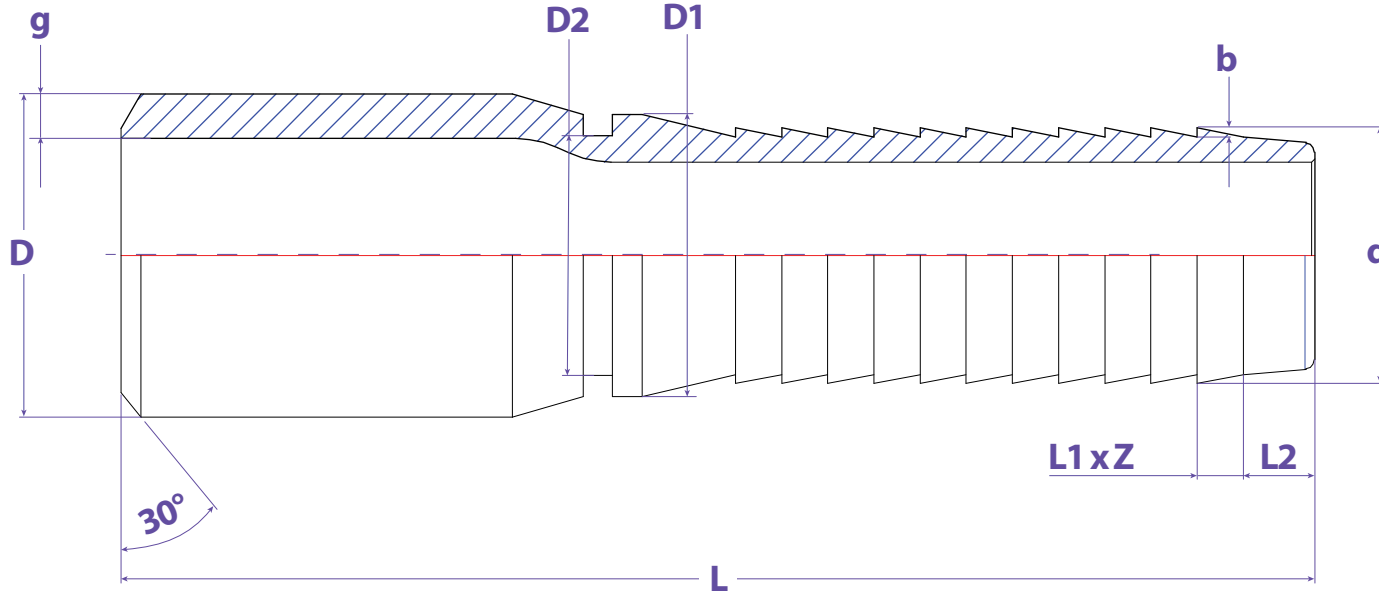




WELD BEVEL



FEATURES & APPLICATIONS:

• General Uses:

A camlock fitting is a type of coupling that is used to connecting hose and or pipes together that transfers liquids, powders and granules. A straight through connection is made that maintains the pipe size and allows the free flow of materials being transferred.

Size	Working PSI	D	D1	D2	d	g	b	L1	Z	L2	L	PART #
1"	150	1.339	1.268	1.169	1.035	0.134	0.031	0.157	11	0.276	4.528	SF100SBC
1-1/4"	150	1.681	1.520	1.413	1.280	0.142	0.031	0.157	11	0.295	4.528	SF125SBC
1-1/2"	150	1.913	1.677	1.563	1.535	0.146	0.039	0.157	13	0.354	4.764	SF150SBC
2"	150	2.382	2.185	2.059	2.031	0.154	0.039	0.197	11	0.394	5.236	SF200SBC
2-1/2"	150	2.874	2.752	2.610	2.531	0.205	0.039	0.197	12	0.394	5.906	SF250SBC
3"	150	3.500	3.315	3.150	3.031	0.217	0.047	0.197	16	0.394	7.008	SF300SBC
4"	150	4.500	4.311	4.157	4.031	0.236	0.047	0.197	18	0.433	7.598	SF400SBC
6"	75	6.626	6.358	6.181	6.047	0.280	0.059	0.256	19	0.472	9.331	SF600SBC

WARNING:

Cam & Groove Couplings should **NOT** be used with any compressed gas, including steam or air. Metal fittings should **NOT** be used with Polypropylene Cam & Groove. Dust Caps and Dust Plugs are **NOT** designed for pressure applications.

Note: All Seal Fast Cam & Groove Stainless Bodies are 316 Investment with 304 Handles.

TITLE CRIMPTEK COMBO NIPPLES - WELD BEVEL

DISCLAIMER

All drawings and specifications are subject to change without notice. Drawings represent general dimensions of our products. Seal Fast cannot guarantee the dimensions in the drawing will exactly match those in the drawing. This drawing is the property of Seal Fast Inc. Copying or reproduction of this drawing is expressly prohibited.

MATERIAL

STEEL TUBE

DRAWING NOT TO SCALE

PART #

SF...SBC

